



**END OF YEAR
2016-17**

**BEST PROJECTED
BEST PRINT
BEST FLORAL
BEST CREATIVE**

**BEST PROJECTED = 15
BEST PRINTS = 07
BEST FLORAL = 11
CREATIVE=14**

**JUDGE
BRUCE SHANKS**

**Please Note: Commentary was not provided for all images in
all categories**

EOY BEST PROJECTED

Dairy for Life



Dunedin



Exploring Bath



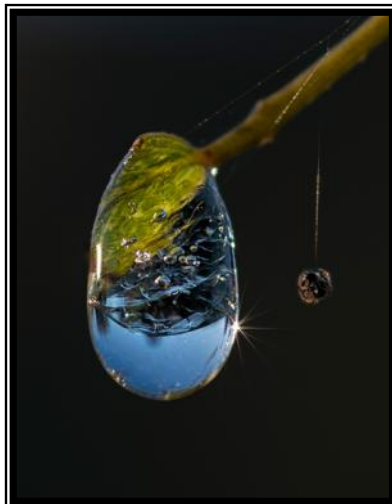
Former Hamilton CPO



Made in India



Morning Dew



The Old Woolshed



Golden Cascade - WINNER

Stark simplicity, creativity, and storytelling, gives us a winning image

EOY BEST PROJECTED CONTINUED

Natural Beauty



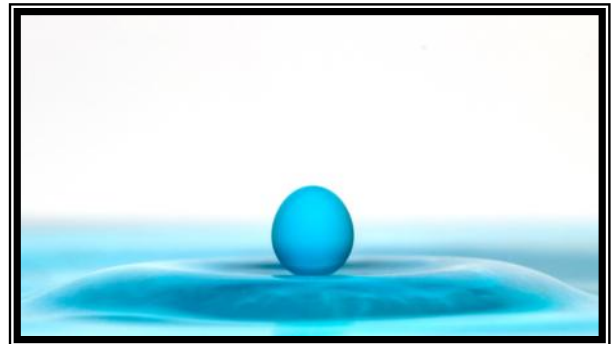
Ngauruhoe Dawn



Omearu Opera House



Water Droplet



The Best Things in Life
are meant to be



Veins



Shadow Play



EOY BEST FLORAL (PROJECTED)

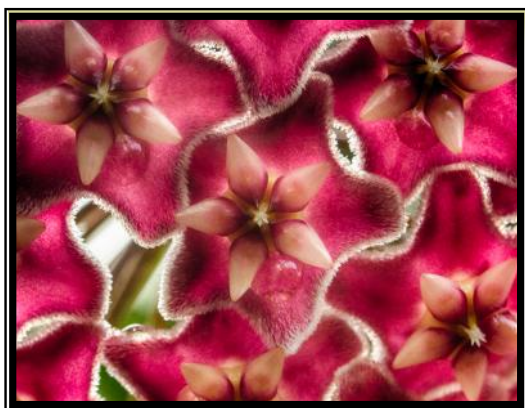


Daffy & the Dills - Acceptance

You had a good idea here, and an understanding of selective focus. However I believe the balance of out of focussness over powers the image. I suggest a crop and a flip-horizontally to place the focal flower in a stronger position within the frame . If presenting on a dark screen, a very narrow white border will define the image

Dogwood Cloud - Merit

Very pleasant colours have been used here to subtly suggest spring. There are some features that detract, in the out of focus area of interest above the flower and bud left of centre. Also the branch moving out of the image at the left , and the re-entering of a leaf above that . Some careful cloning now, or use of secateurs (gardening) before the image capture may have helped. , should result in an image satisfying with less distractions



Floral 2 - Highly Commended

I like the shapes and patterns you have seen and portrayed here, but feel there is too much emphasis on the centre flower and the gap between flowers become more of a focal point, Rotating the image toning down some high-lights, cropping , doctoring the area between flowers and adding a curves vignette. See Below use about a 50 feather . A narrow white border highlights the links in the image

Hawian Red - Acceptance

This is a lovely textured well lit subject, let down by the high lights in the background . The use of a "gobo". Some object (I often use an umbrella to go between the background and the light-source, to cast a shadow onto the background. Works wonders . With your captured image, burning the highlights with the burn tool . Cropping to better structure the image and adding borders, will make for a simpler, and easier to view image.





Lone Daisy - Acceptance

Is a well seen shot and the choice of aperture has drawn our eye to the brilliantly sharp daisy. Unfortunately over half of the picture does not contribute, a good crop from the top half of the image will help considerably. A few of the highlights in, and on the grass need toning down. If it is to be projected on a Black background

screen, then a very, very narrow white border, will delineate the edge of the image and define its proportions.

Out of the Darkness - Highly Commended

This head of flowers has been captured acquisitively, sharp and well lit. However the florets are suspended in space with no visible signs of support. Although the dark background delineates the flowers, but brings an element, of these have been surprised in the dark of night. Some visible means of support and a background with hints of reality, may have produced a more "liveable with" image



Papaver-Paeoniflorum2 - Acceptance

The Paeony-poppy has probably been taken too close, as it lacks a definite focal point, one pink petal merging with the next. Perhaps a whole head, on a suitable background, may have depicted this beautiful flower more aptly

Petaled in Pink - Honours - WINNER

I like the way that this flower and its accompanying bud appear suspended within the frame, with a supportive background, and darker shades of green at the base. The choice of aperture (and resultant depth of field) leaves no doubt in the viewer's mind that the flower is the star of the show, all other elements, vital, but supporting, parts. The interplay between flower and bud hold the viewer's attention within the frame, and the delicate filigree of leaves added texture and grace. The complimentary nature of the colours, adds up to the success of this image, as best in this class.



EOY BEST FLORAL (PROJECTED) CONTINUED

Primular with Bamboo Grass - Merit

This is a simple satisfying image with the geometric shapes of the vase and floral support being offset by the grace of the Bamboo grass, and the daintiness of the Primula head. However, how much of this image is the skill of the Floral artist, and how much has the photographer contributed. Of course, that person could very well be, one and the same. If so The reduction to monochrome and the vignetting are photographic plusses. Reducing the image to a square, and re-applying the vignette, may reduce the area at the top of the image which does not contribute to the story. However the stark white of the bowl, may be better rendered in a more neutral shade.



Simple Beauty - Merit

The very central placement of this circular shaped subject is not a good placement within the frame. Because our fresnel screens on today's cameras leads us to a central composition (which is weak) Always leave sufficient room around the subject to crop to a better structure. It is not many years since I got a Bronze Medal in Natex

Nature, for an image made on a 3.4 megapixel point and shoot. So today's 12 and 18 and even more mega-pixels, can stand quite a bit of cropping. Placing the subject nearer the golden mean and vignetting will improve this image

Slices of Light - Merit

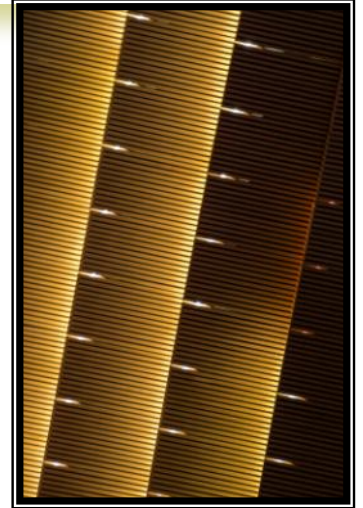
You have seen the pattern of light against the corrugation effect, but your viewpoint has given us an image divided in two. This image required a lesser floral arrangement of only one or two bracts. The right edge of the image in shadow contributes little. I include a rough diagrammatic version of an improvement and a simple crop



EOY BEST CREATIVE (PROJECTED)

Ceiling Way Up High - Highly Commended

This is a very pleasant image and has been well seen. Each panel different in shape and tone, yet rhythmically connected by the high lit prong like structures.



Dorment Lake - Merit

A pleasant scene, which I guess the creativity part (to you) was the reduction of tones to monochrome. This may not be sufficient creativity for many a viewer. The area at the lower right intersection of the thirds, is weak, and may have been helped, by lobbing a stone and creating some circular ripples in that area. Otherwise the image is weighted heavily to the left

Go Hard or Go Home - Highly Commended

A great group shot, expressions and colours, with an imaginative background, that conveys the message. Opposition-we mean business



Happiness-Is - Merit

I find this bridal image some what difficult to view due to the over-use of the swirl-distort tool, and the very static pose of the couple, and the step stool acting as a barrier to progress. Had the couple been running, the swirls

EOY BEST CREATIVE (PROJECTED) CONTINUED

In the Beginning - Merit

This is an interesting image with the S curve. Light appearing out of darkness. I find the area at the left upper third congested and confusing, and believe toning this area down, may give the image more structure. By applying a diagonal graduated filter using Lightroom to the upper left corner, some toning down, by the burn tool in Photoshop, and even a horizontal flip, may add to the creativity, which relies on the circles of confusion, of out of focus high lights for its creativity.



Iron & Water - Merit

Lovely texture, shapes and colours in this image. The high lights so near the edge of the image do not help. Cropping them out gives a better image which, will need re-titling

Love Is - Highly Commended

This is a very creative use of photography to convey a message (idea). The choice of colours, the diagonal tilt, the darker base, all show that you have a great understanding of image structure, and conveying a message



McDino's - Highly Commended

A very imaginative and symmetrical image aided by the off-centre McDino's sign. To my mind some sort of a perspective distort is required, to make the burger appear larger. It needs to have been based on the perspective concept of a wide-angle lens, fall-off, as the dinosaur is too small in comparison to the perspective fall-off in the pier.

Nightmare - Merit

Once again. You had an idea , and have conveyed the fuzziness and confusion, and the odd area of sharp reality that accompanies a night mare. Perhaps the focal point is too central, and a trim from the right would help



On Cloud Nine - Honours - WINNER

The Beautiful creativity of this Bridal shot is a stand out winner in this section Structured well, with a great understanding of composition. At no point, is there an easy out, from this image. The eye rotates in pleasing circles. The delight of the doves, . The colourations within the frame, all speak of a successful image. I would be surprised if this image does not have a great future.

Soap after the rain - Merit

Once again, I am not sure about the creativity here. As an advertising shot I guess it fits the bill. As the label, invites us to read it. . The soap is framed nicely by the lines of structure in the image.. The mind boggles, on how a cake of soap retains its label in the soaking wet. An older cake of soap may tell a better story



Young and Old - Acceptance

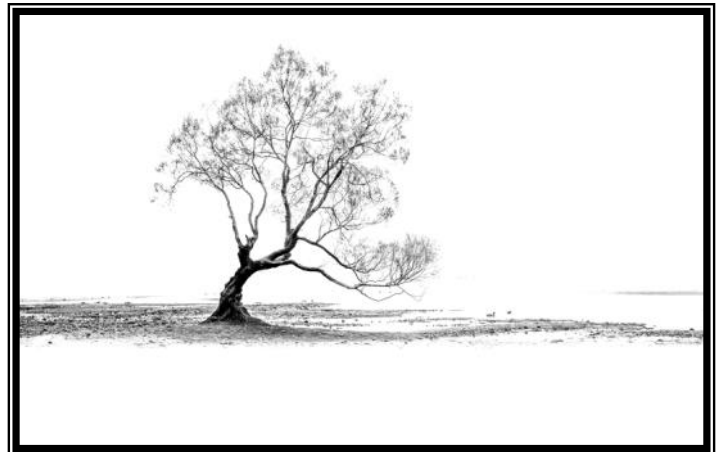
I am not sure where the "creativity" comes into this image. It is a good uncluttered shot of moving vehicle and driver. Perhaps you have re-created "the background"

EOY BEST CREATIVE (PRINTS) CONTINUED

Pink Palm

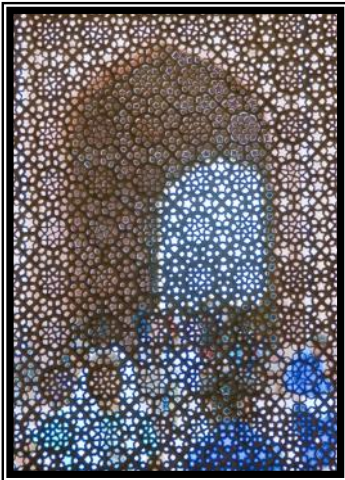


That Tree



BEST PRINT

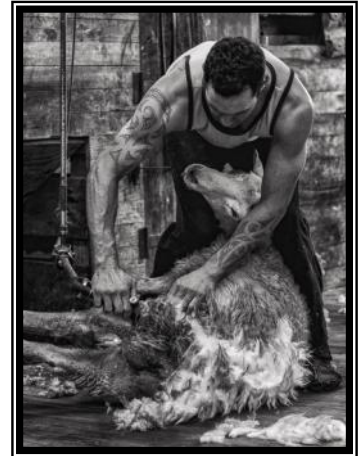
Marble Grill Jhahlli design—India



Pink Power



The Shearer



Precious



Reflections Raglan



The eye of the Apple



South Gate - WINNER

The Structure, The Photographic technique . The red shirt of the cyclist being echoed in the undecipherable sign (which is extremely significant), and the clever vignetting adds up to a powerful image. Worthy of Best